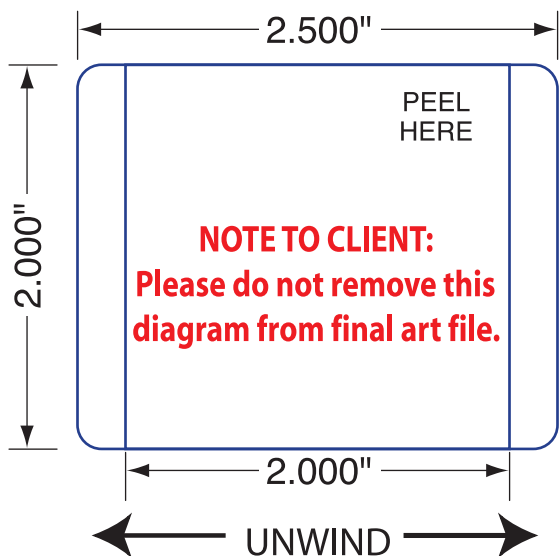


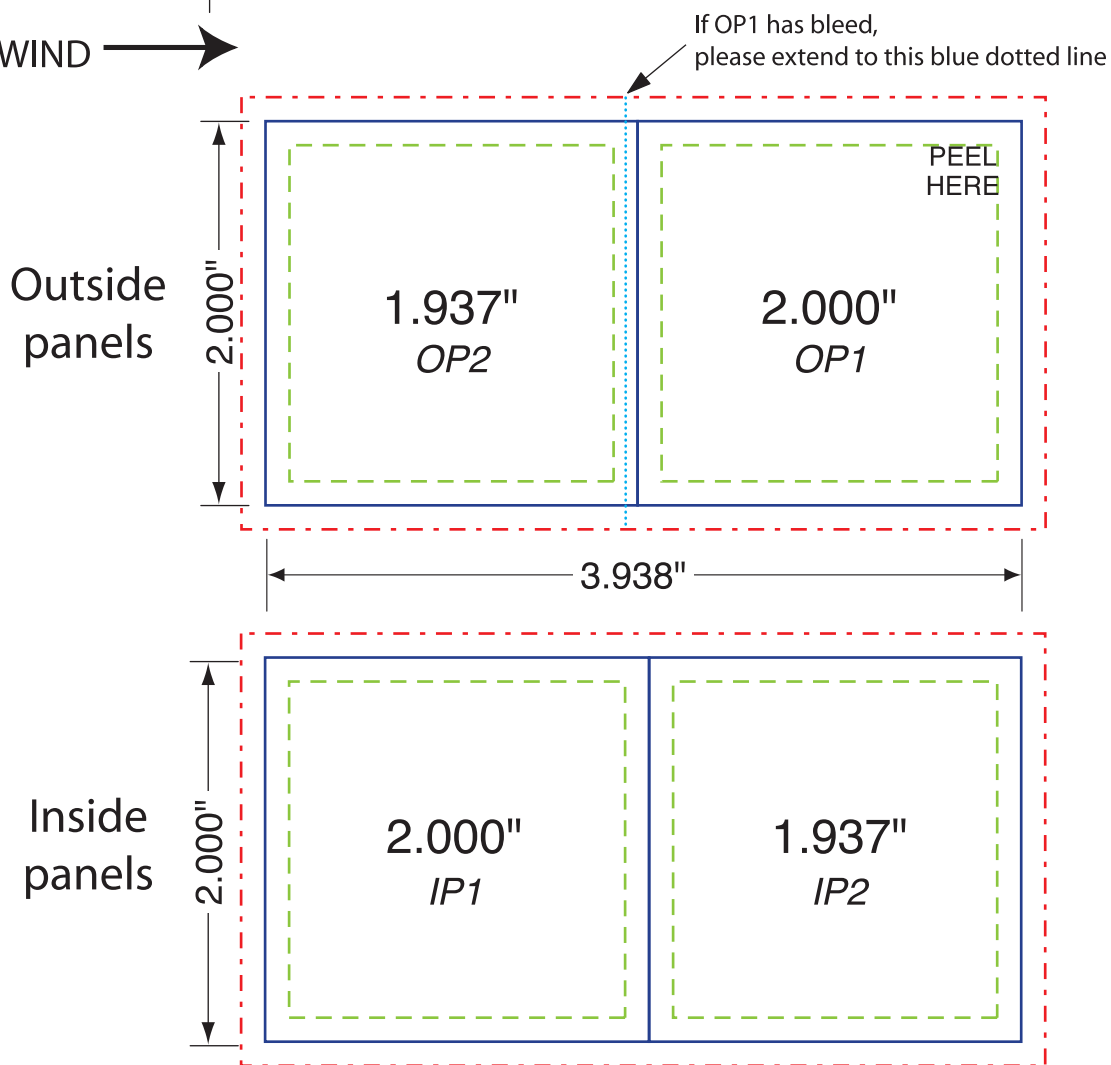
**NOTE TO CLIENT:**  
**If submitting an InDesign file,**  
**INCLUDE A HI-RES PDF Copy.**



**NOTE:**  
**DOCUMENT RASTER EFFECTS SETTINGS**  
**SHOULD BE SET AT 300 RESOLUTION**



**NOTE: Please do not modify template**  
**Booklet**



<p><b>Die Number:</b> 10-0059</p> <p><b>Die Cut Size:</b> 2.00" x 2.500"</p> <p><b>Corner Radius:</b> .125"</p> <p><b>Wing Size, Each Wing:</b> .250"</p> <p><b># Panels:</b> 2</p> <p><b>Lip Size:</b> .0625"</p> <p><b>Folded Litho Size:</b> 2.00" x 2.00"</p> <p><b>Open Litho Size:</b> 2.00" x 3.938"</p> <p><b>Tech:</b> WL</p>	<p><b>DRAWING KEYS</b></p> <p>Cut/Fold Lines —————</p> <p>1/8" Bleed Lines - - - - -</p> <p>Text Limit Lines - - - - -</p> <p>OP1 Bleed Line ·······</p>	<p>OP is "Outside Panel"</p> <p>IP is "Inside Panel"</p>	<p><b>EMBED IMAGES OR INCLUDE LINKS &amp; OUTLINE YOUR FONTS</b></p> <p><b>Some Notes to the Designer:</b></p> <ol style="list-style-type: none"> <li>1. Hold all text 1/8" from Cut Marks. (Also critical graphic elements.)</li> <li>2. Bleed full coverage background graphics 1/8" beyond Cut Marks.</li> <li>3. PEEL HERE verbage recommended for upper right corner of OP1.</li> <li>4. If OP1 has full coverage graphics, bleed 1/16" to 3/32" onto OP2.</li> <li>5. This Template is provided in 2 layers. Simply turn off the text layer to use the layout only as a placed image in your document.</li> </ol>
--	--	--	---